

Australian Teletrial Program

Access to clinical trials, closer to home



Healthcare challenges in regional, rural and remote Australia

- On average, Australians living in regional, rural and remote areas have shorter lives, higher levels of disease and injury and poorer access to and use of health services, compared with people living in metropolitan areas*.
- RRR populations face barriers taking part in clinical trials, including distance, cultural difference, geographical isolation and workforce capacity**.
- *Commonwealth Australian Institute of Health and Welfare, Rural and Remote Health 2019
- **Commonwealth Department of Health Budget 2020-21 paper.



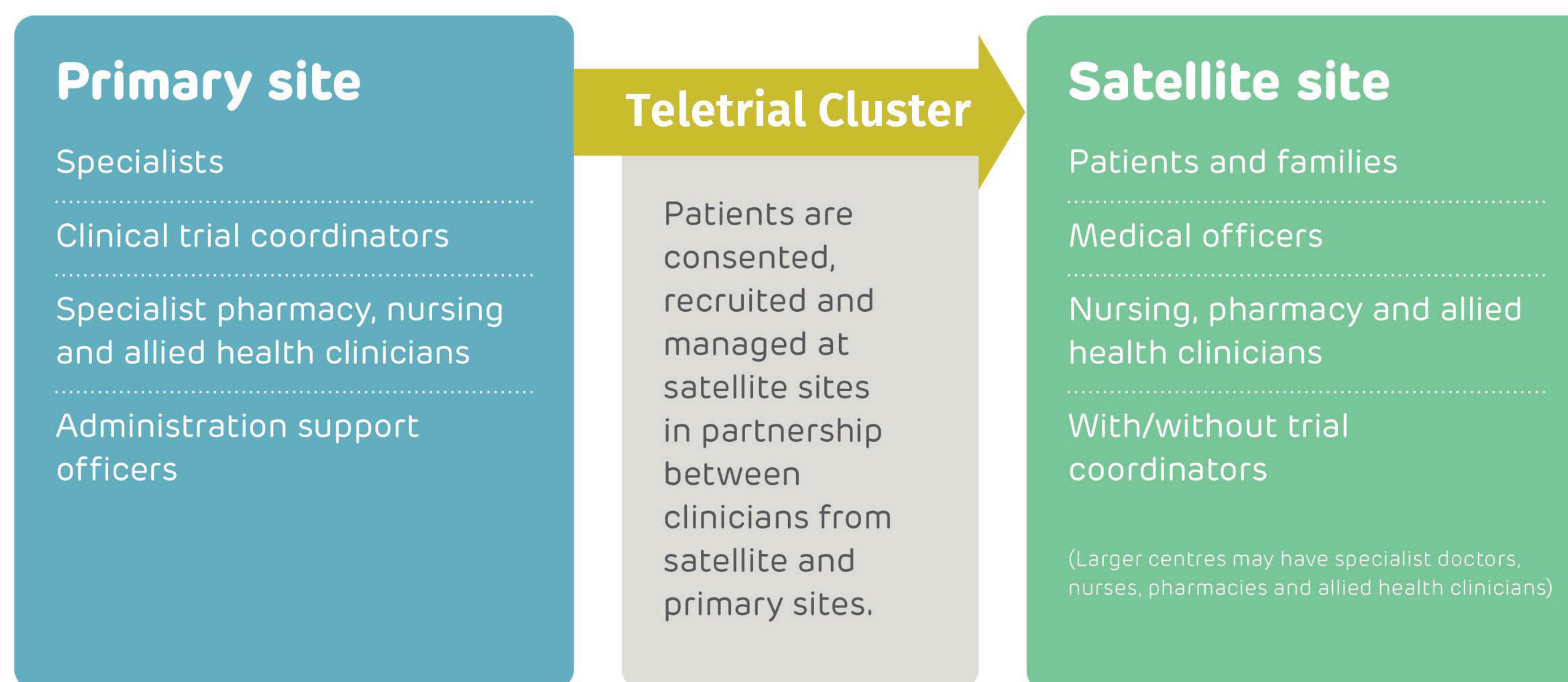
How the Australian Teletrial Program can help

- “A Teletrial uses telehealth technology to communicate between the Primary Site and the Satellite Site for some or all aspects of a Clinical Trial” *National Teletrials Compendium*
- This allows clinicians and patients to participate in trials close to home
- Currently 88% of patients in clinical trials are from metropolitan areas
- Teletrials make new novel drugs, technologies, and optimal management options/cutting-edge therapies accessible, overcoming the need for participants to travel long distances to city areas.



Australasian Teletrial Model

Australasian Teletrial Model

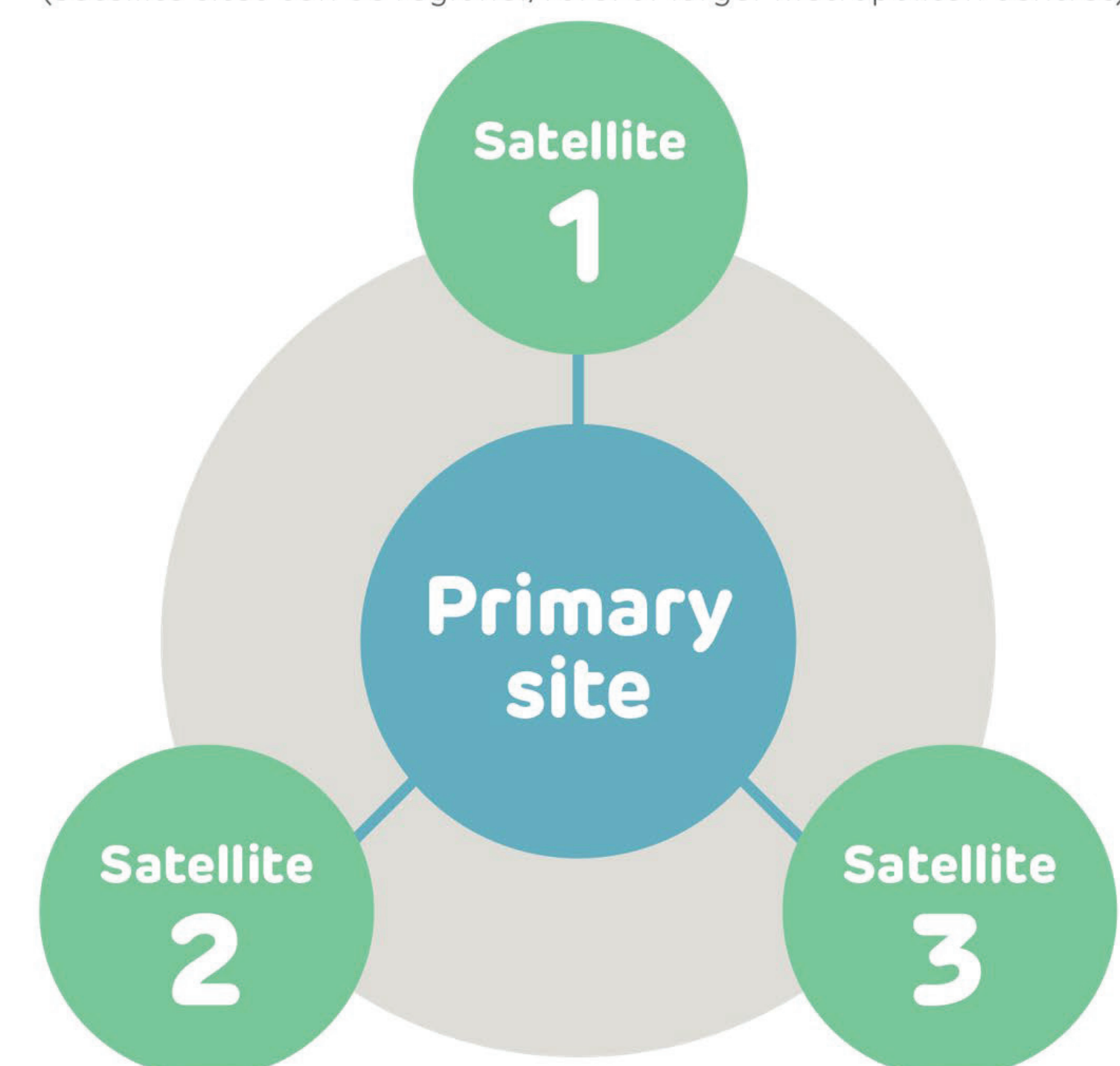


Sabesan & Zalcborg, EJCC, 2016

Trial Cluster

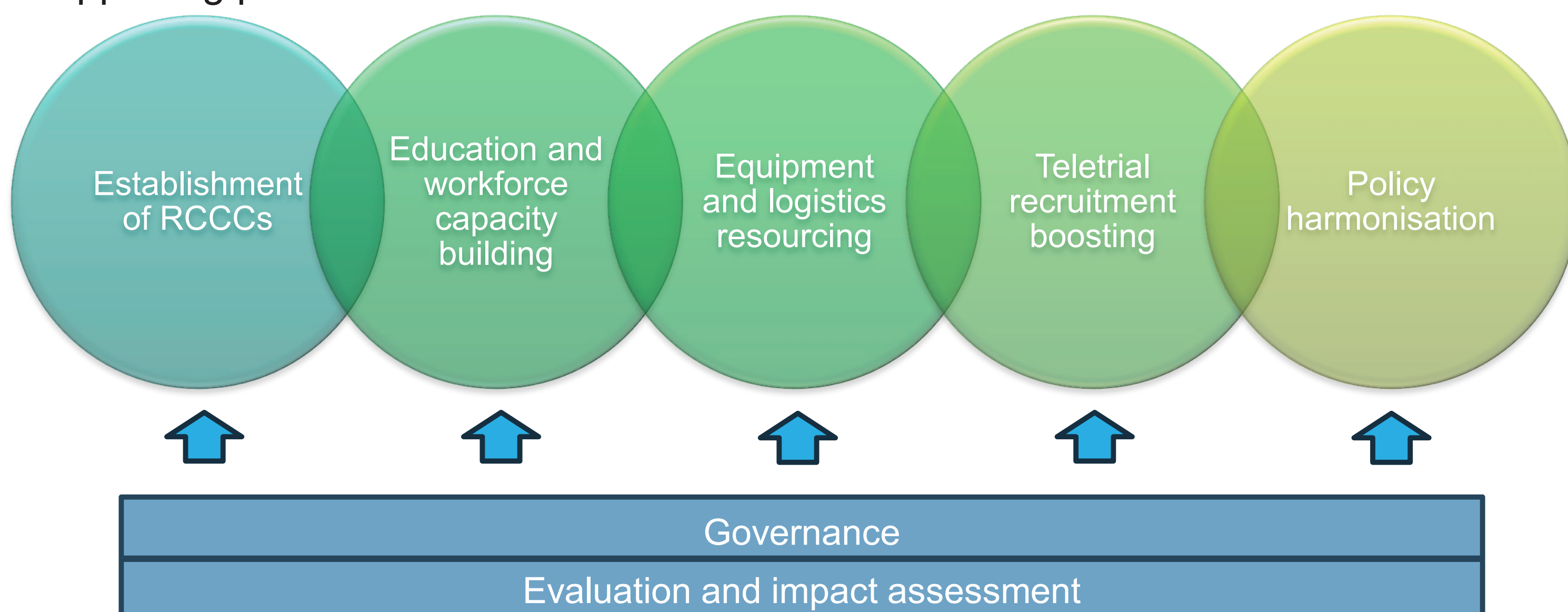
Primary and Satellite sites form a cluster to consent, recruit and treat patients as defined in the Supervision Plan

(Satellite sites can be regional, rural or larger metropolitan centres)



National Implementation Components

Supporting pillars



Regional Clinical Trial Coordinator Centre (RCCC)

- There are seven RCCC hubs across Victoria
- The Clinical Trial Research Support Service (CTRSS) can help with:
 - Start-up support and financial incentives
 - Liaising with Sponsors and Collaborative research groups
 - Setting up and coordinating Teletrial site 'clusters'
- World-first treatment for country Victorian Marilyn
 - Marilyn's cancer could not be treated with chemotherapy or radiation
 - Living 270km from Melbourne and 35km from hospital, she volunteered for a Teletrial, giving her local access to treatments not yet available to the general public
 - Today, Marilyn is planning an overseas trip, and says "being closer to home and loved ones during the entire treatment journey is invaluable".

